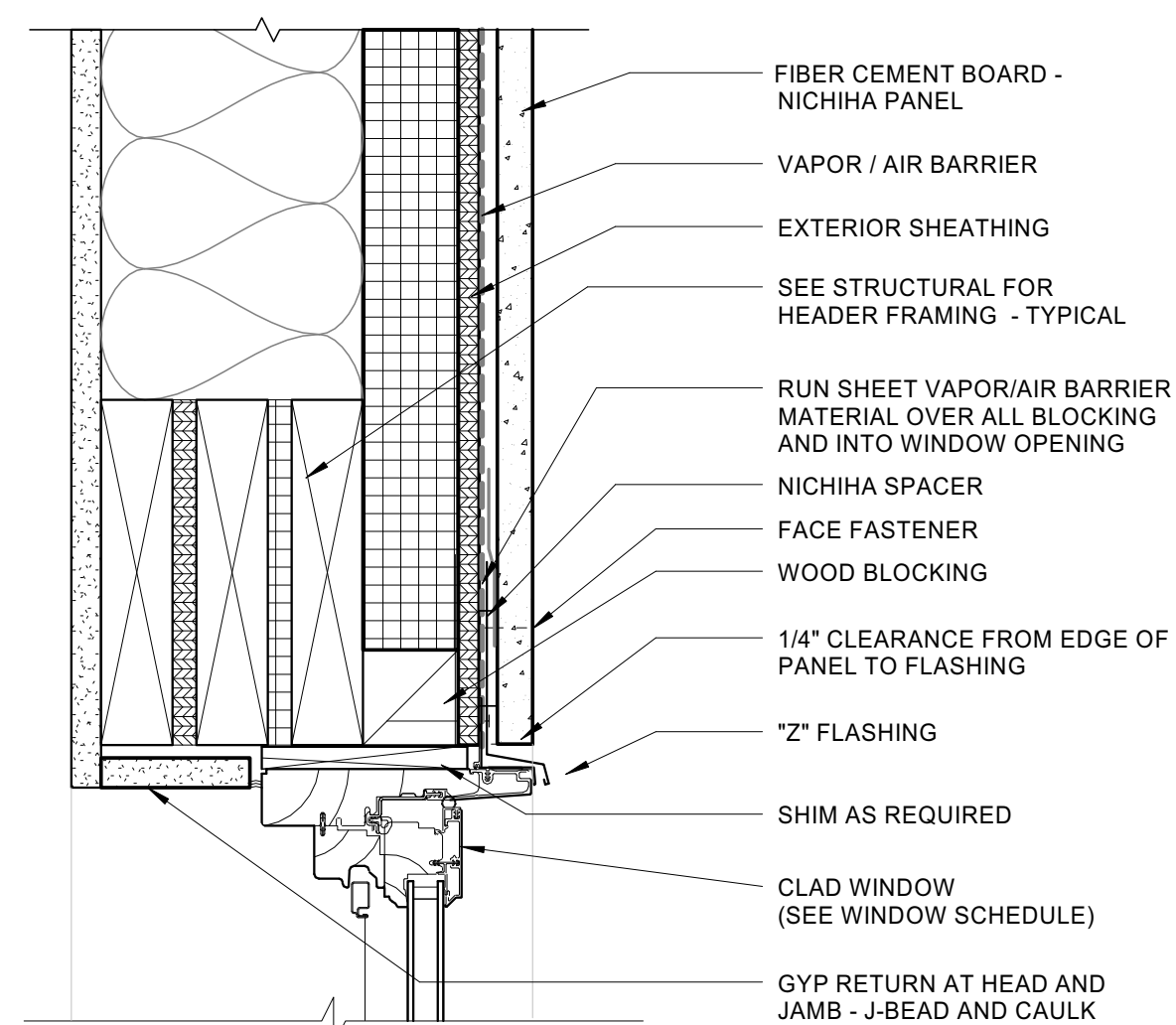
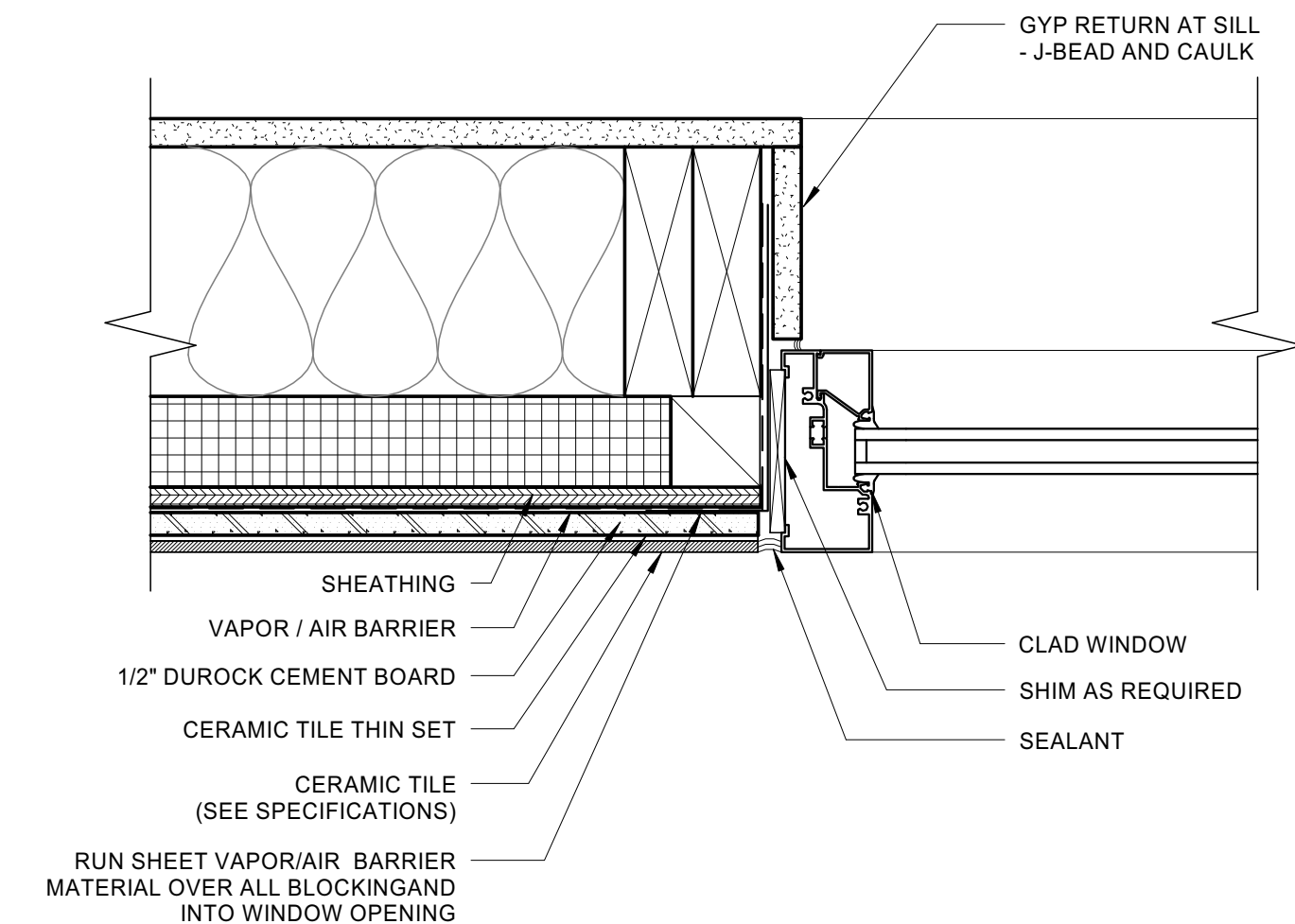


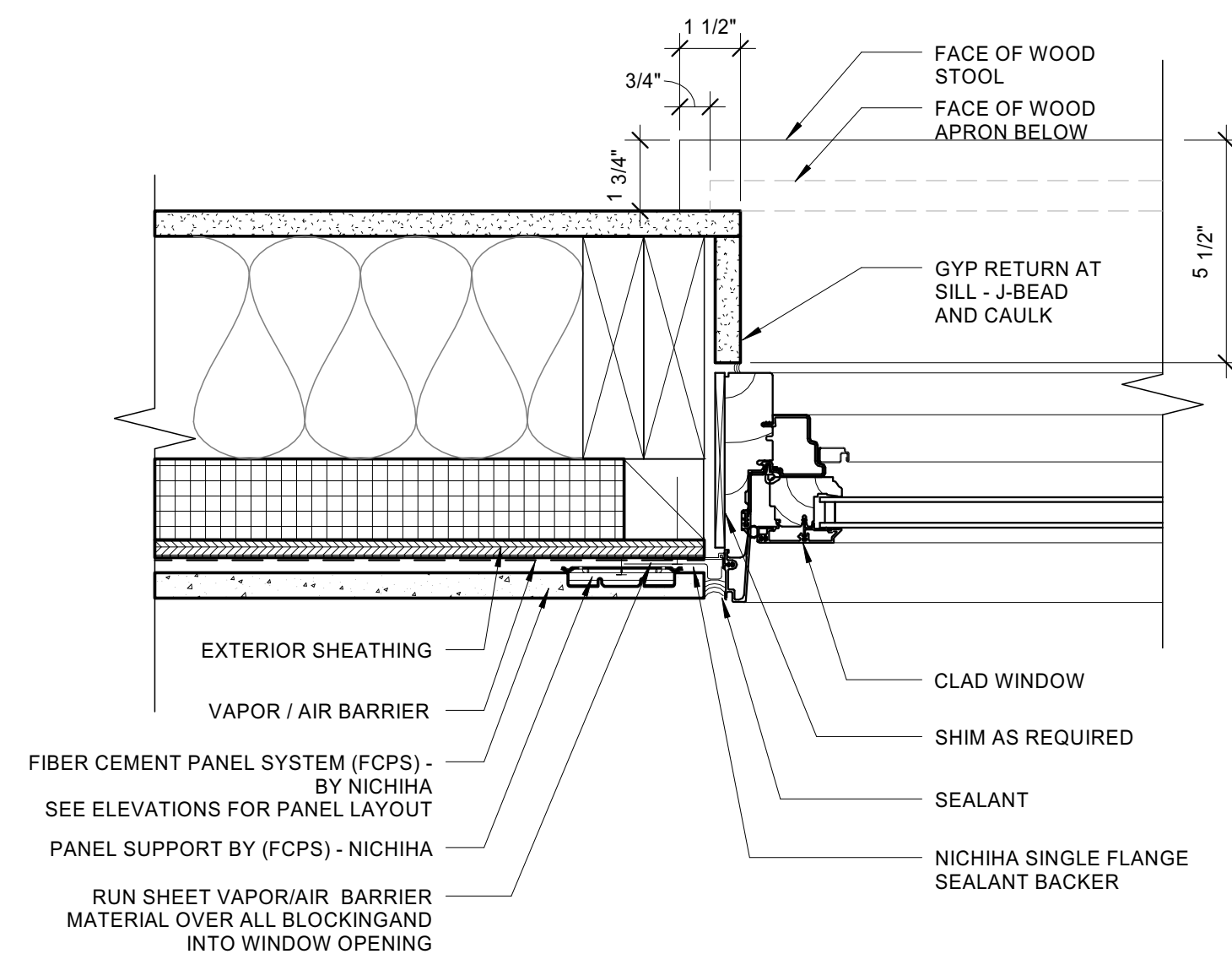
4 | TYPICAL WINDOW HEAD - ALUM ST.FRONT



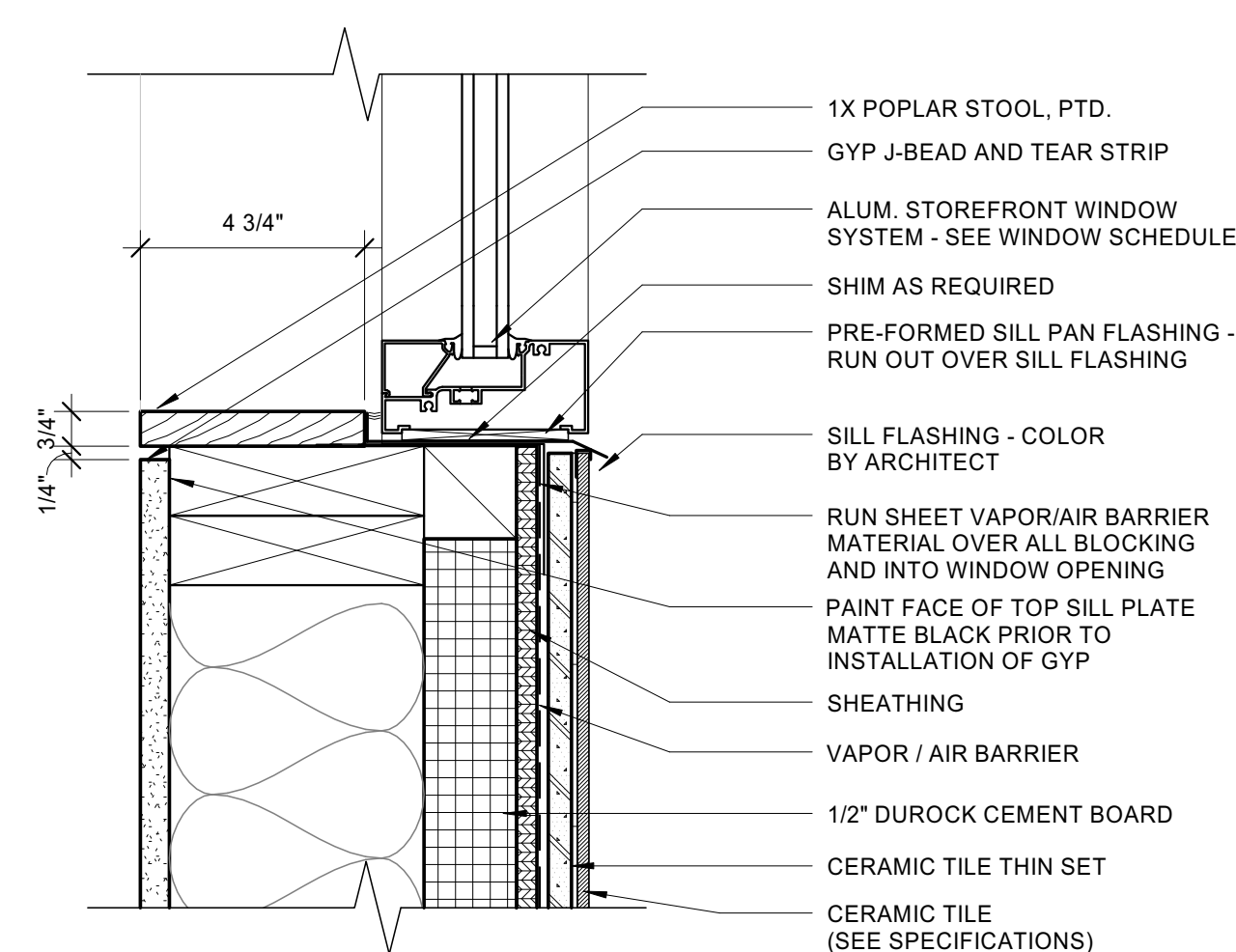
1 | TYPICAL WINDOW HEAD DETAIL



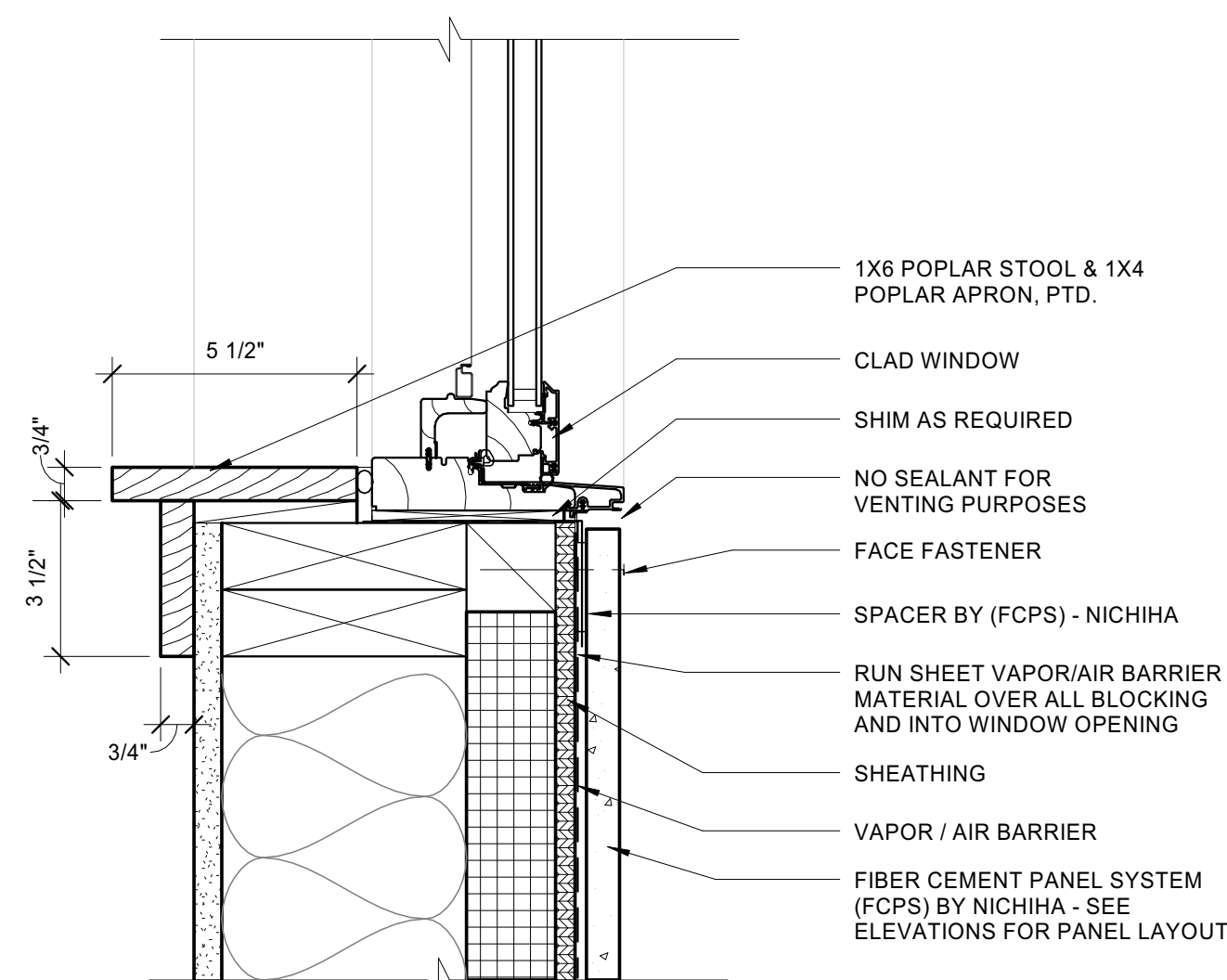
5 | TYPICAL WINDOW JAMB DETAIL - ALUM ST.FRONT



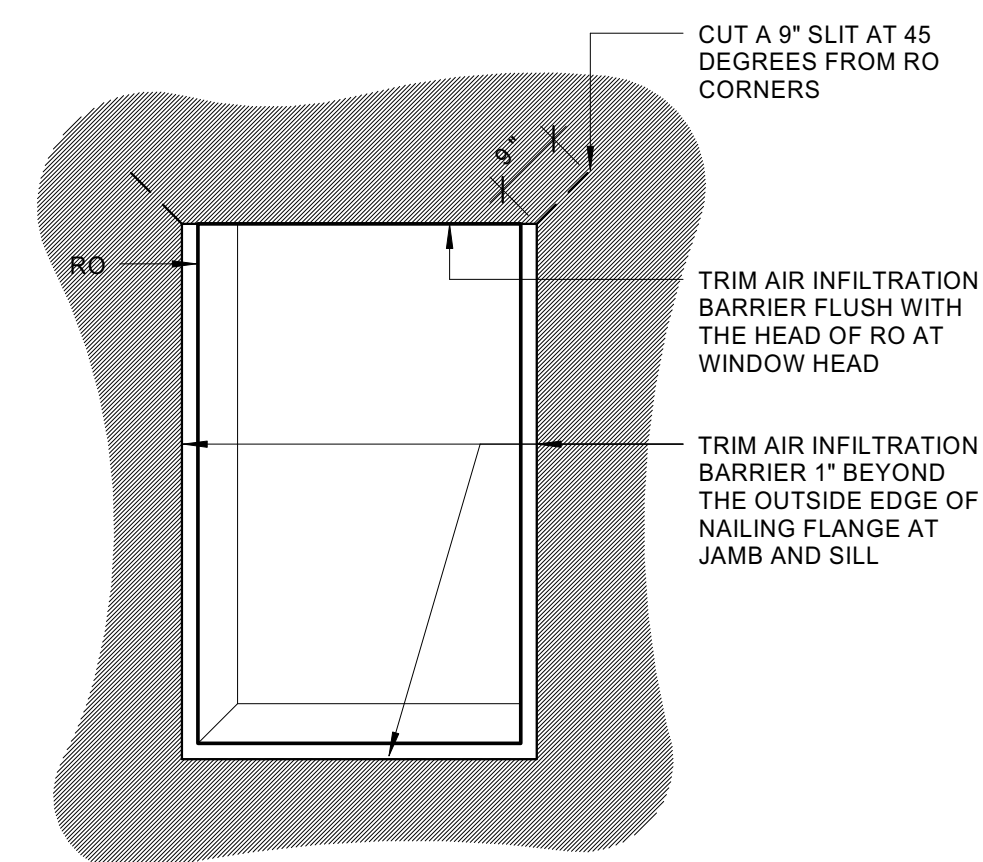
2 | TYPICAL WINDOW JAMB DETAIL



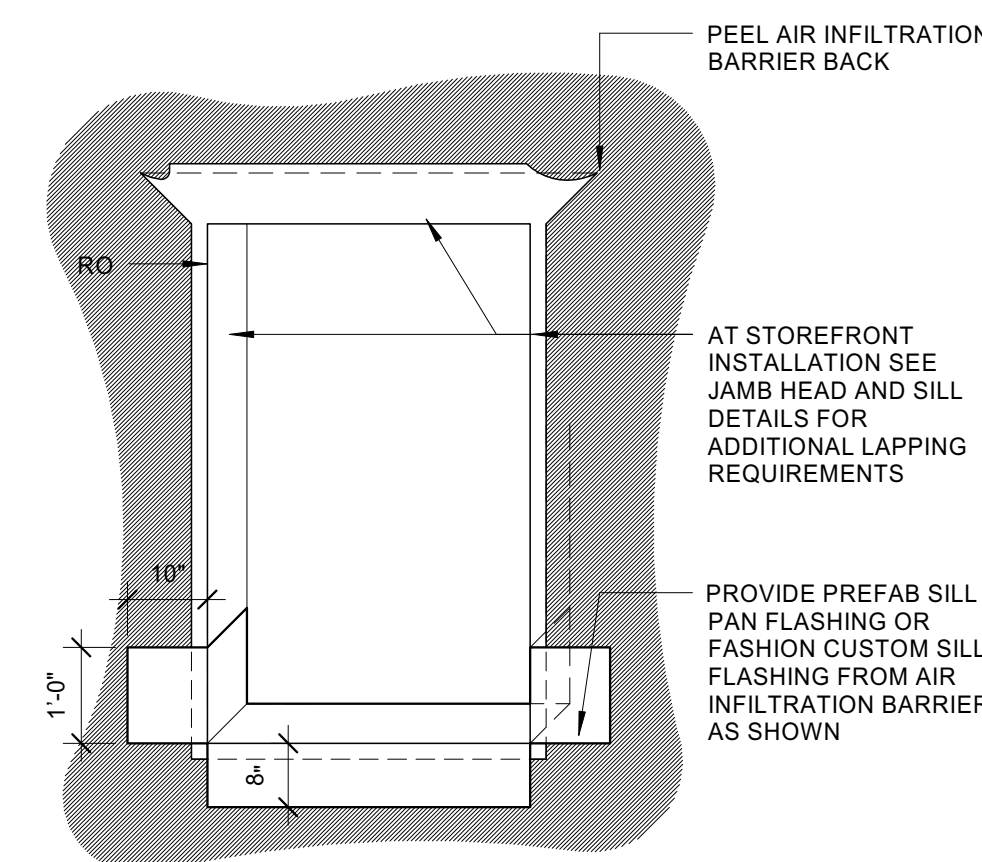
6 | TYPICAL WIN. SILL DETAIL - ALUM. ST.FRONT



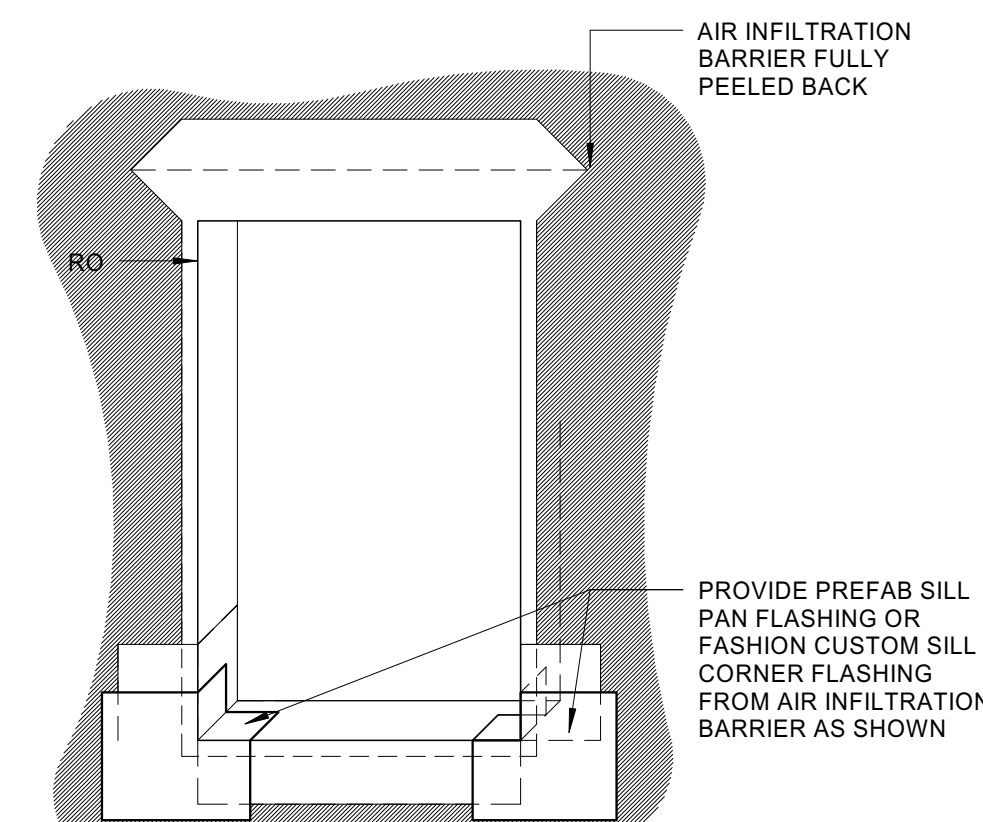
3 | TYPICAL WINDOW SILL DETAIL



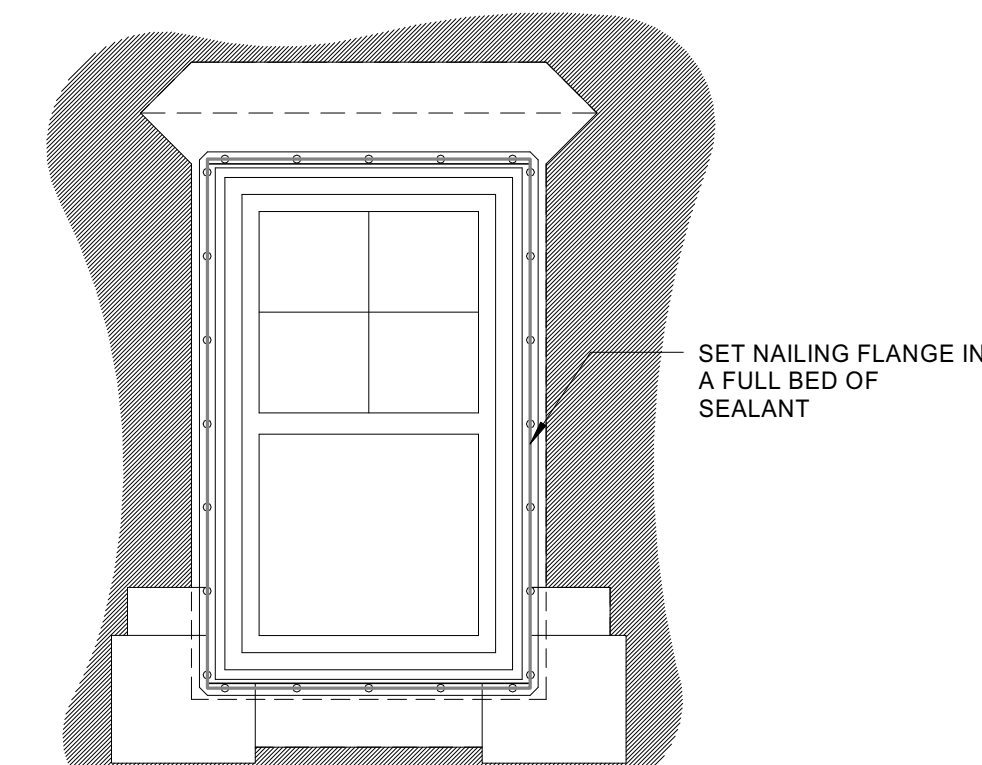
1



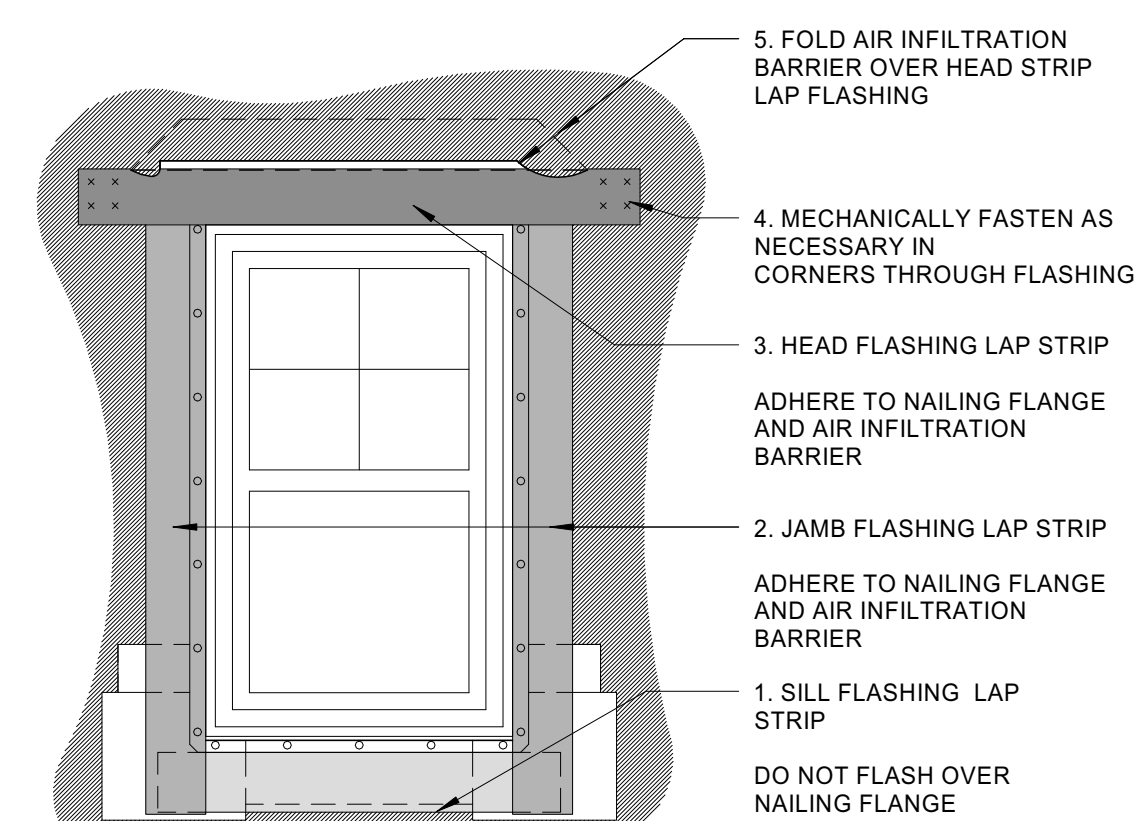
2



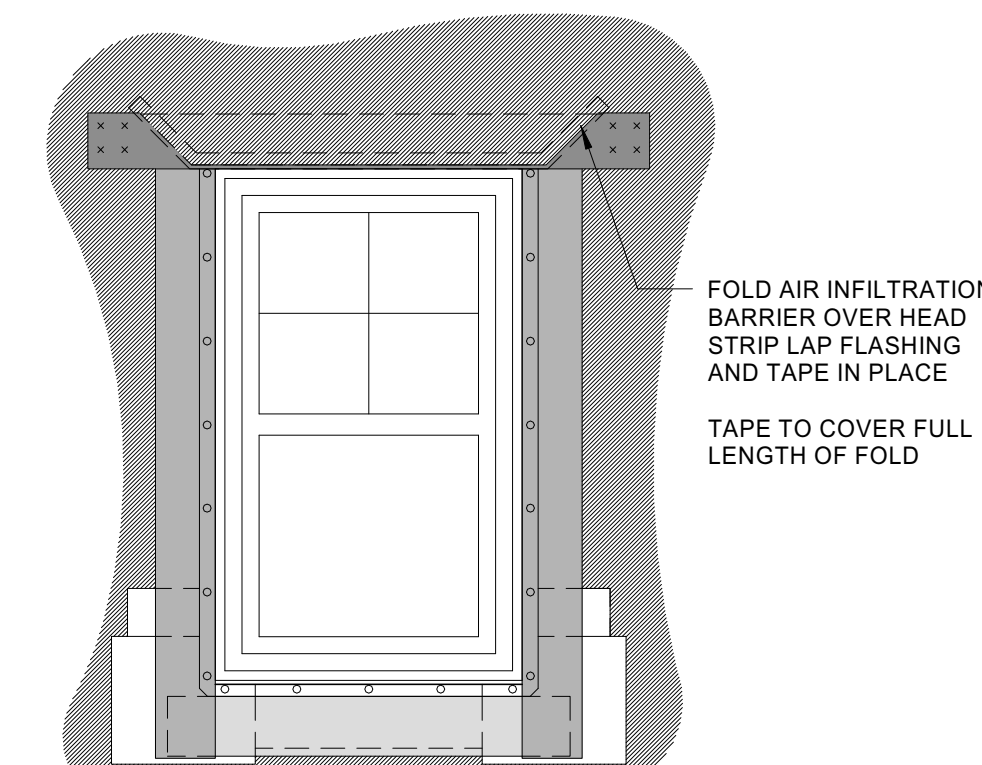
3



4



5



6

ORDER OF INSTALLATION OF WATER PROOFING AT WINDOWS. WATER PROOFING AT STOREFRONT AND DOORS USE STEPS 1-3

- NOTES:
1. INSTALL AIR INFILTRATION BARRIER IN ORDER AS SHOWN BY NUMBERS.
 2. IF APPLICABLE, LEAVE RELEASE PAPER ON LOWER HALF OF SILL FLASHING UNTIL FUTURE TIE-IN.
 3. INSTALL FLASHING AND AIR INFILTRATION BARRIER TO FORM WATER SHEDDING LAPS
 4. COORDINATE WITH FLASHING REQUIREMENTS OF WINDOW MANUFACTURER
 5. FOLLOW MANUFACTURES RECOMMENDATIONS FOR INSTALLATION.

NOTE: MOCK-UP FIRST WINDOW TO BE APPROVED BY AND ARCHITECT PRIOR TO ANY INSTALLATION

9 | ORDER OF INSTALLATION OF WATERPROOFING AT WINDOWS